

## Model NSR66-BD3 Belt Damage Detector

### Description

NSR66-BD3 Belt Damage Detector Switches are conveyor safety accessories are designed for alarming and shutting down a conveyor belt system in the event of a damaged belt. They are mounted on both sides of the belt as a pair with the cables crossing underneath it. If something is hanging below the belt or sticking through, it will trip one or both cables. Cable will pull spring loaded ball out of its socket and two microswitches will actuate. One switch is used for alarm and other is used for shut down. This switch will protect the belts from costly repairs and downtime.

The product is suitable for reliable long term usage in most industrial applications due to its heavy-duty design. Anti-static powder coated aluminium cast enclosure is resistant to corrosion and oxidation. NSR66-BD3 series products do not require any maintenance.

All models designed according to relevant UL and CE standards.

### Technical Specifications

- Enclosure: Aluminium Casting
- Rating: 125/250 VAC 15 A | 14 VDC 15 A , 30 VDC 6 A
- Output: 2x SPDT (stop), optional 4x SPDT
- Cable Entry: 3x 3/4" NPT (2x 3/4" NPT for signal light versions), optional M20
- Temperature Rating: -45°C to +80°C
- Protection Class: NEMA 4X, IP66
- Enclosure Color: Yellow (RAL 1012)
- Weight: 5.4 kg
- Impact Rating: IK09 (EN 62262)
- Warranty Period: 24 Months

### Options

- Bus Security Interface **PROSEC**
- Signal Light on Top Cable Entry

### Safety Standards

- |                   |          |
|-------------------|----------|
| Electrical Safety | UL 508   |
|                   | EN 60947 |
| Mechanical Safety | EN 60204 |
| Outdoor Safety    | EN 60529 |
| Impact Resistance | EN 62262 |

### Certificates

UL LISTED (E531401) CE ENEC Ex (optional)

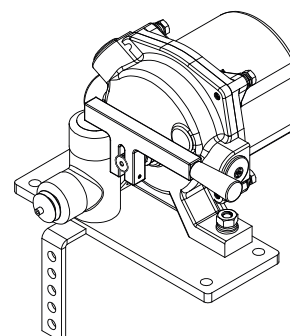
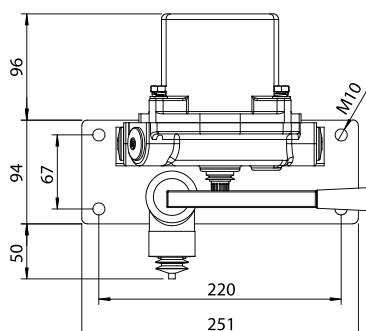
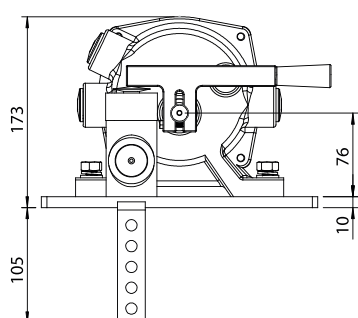


### Spare Parts

Model	Features
Z-15GW22-B	1NO+1NC Switch
122.R1.1242	M25x1,5 Cable Gland
122.R1.1241	Blind Plug
166.MA1.1713	Mounting Bracket
166.G1.1110	Enclosure
166.KL1.1712	Arm
166.H1.1723	Stainless Steel Cable and Balls

Please refer to the manual for instructions. See our KBT Accessories catalog for installation equipment.

### Technical Drawing



Dimensions are in mm.

[www.kbtelektrik.com](http://www.kbtelektrik.com)