

Model NSR90-PR Pull Rope Emergency Stop Switch

Description

NSR90-PR Pull Rope Emergency Stop Switches are designed for shutting down a conveyor belt or machinery and assuring system safety. They are mounted alongside the conveyor belt, with tensioned steel cords attached to the switch. When the cable is pulled or the cable loses its tension, the switch will actuate and system will shut down. Then the switch can be reset manually with resetting lever.

The product is suitable for reliable long term usage in most industrial applications. Can be used in dusty and dirty due to its IP67 protection class. Enclosure is aluminum cast, shaft mechanism is stainless steel and the resetting lever is made of durable plastic. NSR90-PR series products do not require any maintenance.

Rope length is 100 m in one or both ways (2 x 100 m when used both ways). All models can be equipped with an alarm switch and signal light so alarming switch can be spotted from distance. Standard product's contact structure is 1NO+1NC. If requested, 2NO+2NC is available.

All models conform to CE (European Union) and EAC (Eurasian Customs Union) standards. Microswitches used in these products are VDE approved.

We recommend tested and approved KBT Connection Equipment for installation.

Technical Specifications

- Enclosure: Aluminum Casting
- Cover: Stainless Steel
- Micro Switch Rating: 240 V 3A ➔
- Output Signal: (2) SPDT Stop
- Cable Gland: 3 x M16x1,5
- Temperature Rating: -40° C to +80° C
- Rope Length: 1x100 and 2x100 metres
- Contact Type: Snap-action
- Mounting Bolts: 4 x M8
- Protection Class: IP67
- Enclosure Color: Red (RAL 3020)
- Weight: 1.9 kg
- Mounting Orientation: It is suitable for double-sided use.
- Impact Rating: IK09 (EN 62262)
- Warranty Period: 24 Months

Options

- ATEX Zone 21 / Zone 22
- Mounting Bracket
- Signal Light and Alarm

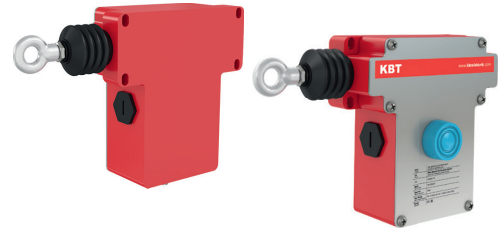
Safety Standards

- Electrical Safety EN 60947-5-1
- Mechanical Safety EN 60204
- Outdoor Safety EN 60529
- Impact Resistance EN 62262

Certificates

CE EAC

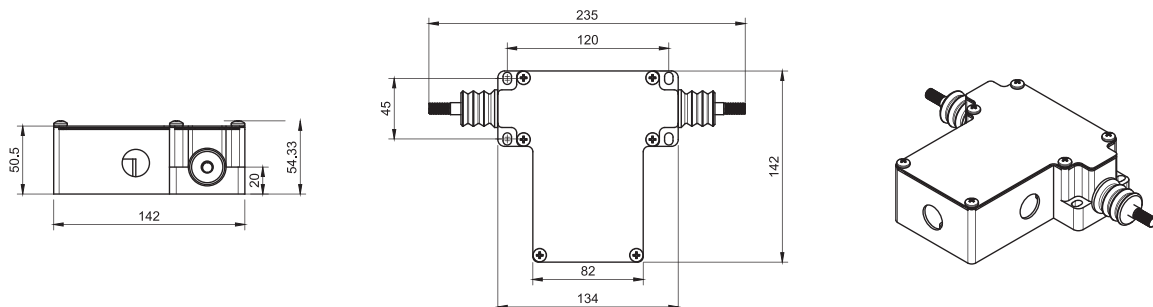
Micro switches are VDE approved.



Model Specifications

Model	Contact Structure	Description	Rope Length
NSR90-PR-22	2NC + 2NO	Double Sided + Reset With Button	2 x 100 Metres
NSR90-PR-22K	2NC + 2NO	Double Sided + Reset With Key	2 x 100 Metres
NSR90-PR-R22	2NC + 2NO	Single Side (Right) + Reset With Button	1 x 100 Metres
NSR90-PR-R22K	2NC + 2NO	Single Side (Right) + Reset With Key	1 x 100 Metres
NSR90-PR-L22	2NC + 2NO	Single Side (Left) + Reset With Button	1 x 100 Metres
NSR90-PR-L22K	2NC + 2NO	Single Side (Left) + Reset With Key	1 x 100 Metres
NSR90-PR-11	1NC + 1NO	Double Sided + Reset With Button	2 x 100 Metres
NSR90-PR-11K	1NC + 1NO	Double Sided + Reset With Key	2 x 100 Metres
NSR90-PR-R11	1NC + 1NO	Single Side (Right) + Reset With Button	1 x 100 Metres
NSR90-PR-R11K	1NC + 1NO	Single Side (Right) + Reset With Key	1 x 100 Metres
NSR90-PR-L11	1NC + 1NO	Single Side (Left) + Reset With Button	1 x 100 Metres
NSR90-PR-L11K	1NC + 1NO	Single Side (Left) + Reset With Key	1 x 100 Metres

Technical Drawing



Dimensions are in mm.

www.kbtelektrik.com